

**DRAWWORKS**

FAILING 2500 SE (300 hp/224 kW)  
Input: CUMMINS LTA-10 (290 hp/216 kW)

**MAST**

Failing  
Single Hydraulic  
Height: 19.76 m  
G.N.C: 113,360 daN  
Static Hook Load: 68,160 daN (6 lines)

**SUBSTRUCTURE**

Drumatic 1 skid  
KB to Ground: 3.5 m  
Clear Work Height: 2.95 m

**MUD PUMP #1** (Triplex)

Oilwell 350PT  
Rated: 350 hp/261 kW  
Input: 3406 Cat (420 hp/313 kW)

**MUD TANK**

1 Tank (32 m3)  
Shaker: Brandt  
1 Mixing Pumps: 75 hp/56 kW

**HYDRAULIC POWER UNIT**

1x 180cc Sun Stad  
2x 30cc Com  
Input: Cum Lt-10 ( )

**LIGHT PLANT**

Rated: 134 hp/100 kW  
Input: CUMMINS 6BT5.9G2 (134 hp/100 kW)

**B.O.P.'s** (180 mm x 21,000 kPa NACE)

Hydril Annual  
2 Townsend Sngl

**ROTARY TABLE**

444.5 mm

**SWIVEL**

BOWEN POWER S2.5  
Rated: 75,600 daN

**HOOK BLOCK**

McKISSICK  
Rated: 31,000 daN

**CHOKE MANIFOLD**

51 mm x 21,000 kPa

**ACCUMULATOR**

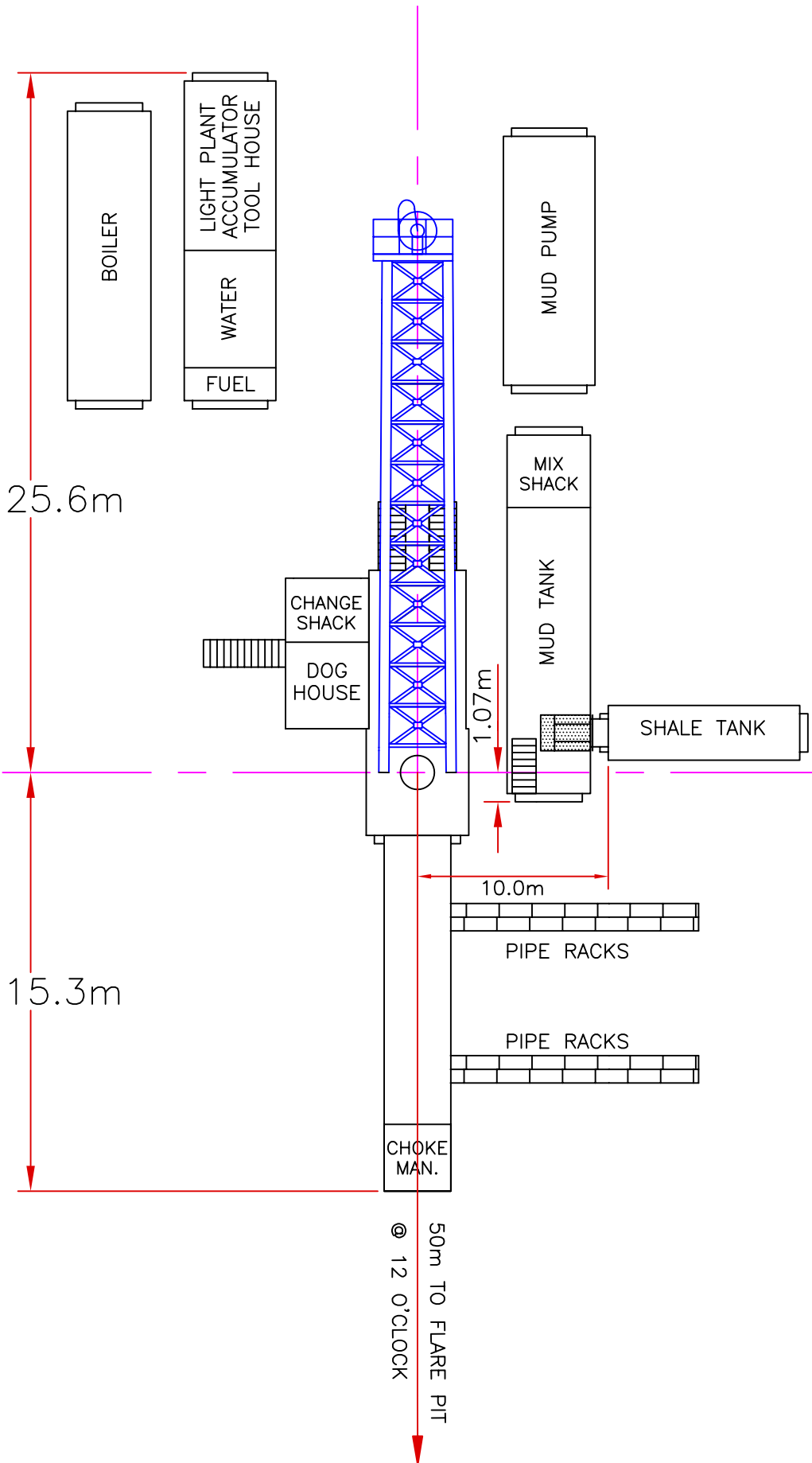
Koomey-4 Station A/H

**BOILER**

Lister (101 hp)

**AUXILIARY EQUIPMENT**

HYDRAULIC PIPE TUB  
PIPE HANDLING ARM  
ARO BULK OIL TRSFR SYTM



#441

850 m

05-Aug-2005

**ENSIGN**

**Encore Coring & Drilling**